

Offers Time-Saving Capabilities

pcaSlab is highly efficient in helping engineers analyze, design and investigate reinforced concrete floor systems.

Like its predecessor ADOSS, pcaSlab analyzes both two-way slab systems as well as one-way slab and beam systems.

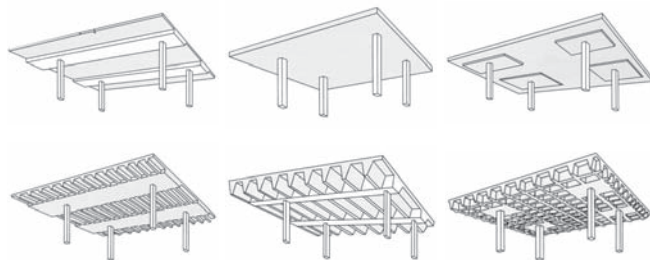
pcaSlab continues to support ACI 318 (American) and CSA.A 23.3 (Canadian) codes in both English and metric units.

Analysis and design tools in pcaSlab are provided for the following systems:

- > Simple and continuous beams
- > One-way slabs
- > Two-way flat plates
- > Two-way flat slabs (with drop panels)
- > One-way pan joist systems (Standard modules)
- > One-way skip joist systems (Wide modules)
- > Two-way joist systems (Waffle slabs)

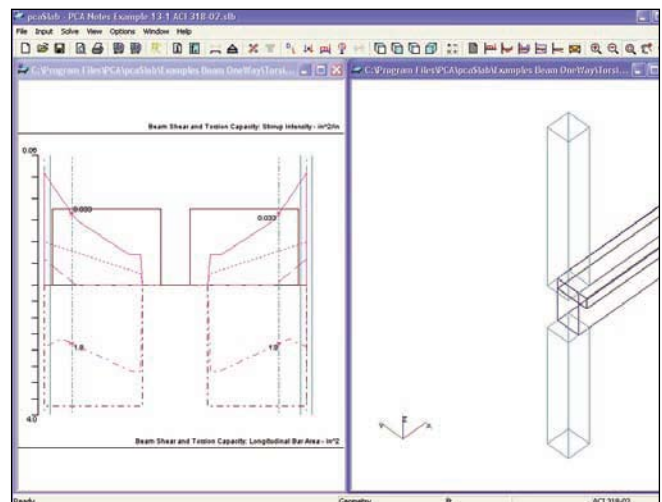
This program incorporates torsion into shear design and investigation of beam systems. Shear capacity including torsion is represented in terms of required and provided area of transverse and longitudinal reinforcement.

Additional savings in both material and labor can be achieved using the new moment redistribution feature. It allows up to 20% reduction of negative moments over supports reducing reinforcement congestions in these regions.



www.StructurePoint.org
847.966.4357

pcaSlab enables the user to integrate up to 20 spans and two cantilevers of multiple floor system types in each model. Beyond new slab analysis and design, pcaSlab can perform strength investigation for evaluation and/or modifications to existing building slabs. The program promises to save users time crosschecking designs with applicable provisions of relevant design codes.



pcaBeam includes only beam and one-way slab system capabilities and is available as a limited version of pcaSlab.

Flexible licensing options include both hardware and software protection for standalone and network licensing. Commuter and corporate licensing along with maintenance subscription provides a wide spectrum of enhanced customer service, engineering services and technical support to help you keep your projects profitable and on schedule.

Designed with the engineer in mind, pcaSlab, combines beam and slab design tools to help you work more quickly, simply and accurately.

Work quickly.
Work simply.
Work accurately.

StructurePoint's Productivity Suite of powerful software tools for reinforced concrete analysis & design

pcawall

Finite element analysis & design of reinforced, precast ICF & tilt-up concrete walls

pcabeam

Analysis, design & investigation of reinforced concrete beams & one-way slab systems

pcacolumn

Design & investigation of rectangular, round & irregularly shaped concrete column sections

pcaslab

Analysis, design & investigation of reinforced concrete beams & slab systems

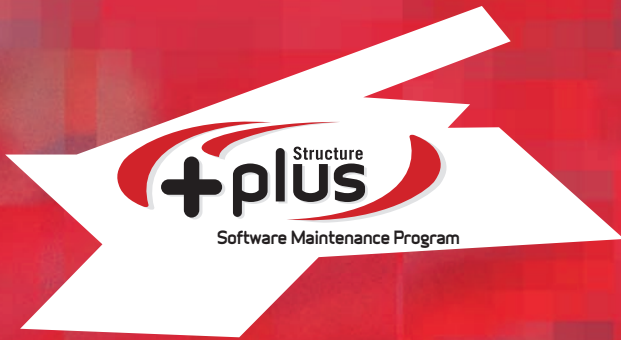
pcamats

Finite element analysis & design of reinforced concrete foundations, combined footings or slabs on grade

StructurePoint's suite of productivity tools are so easy to learn and simple to use that you'll be able to start saving time and money almost immediately. And when you use StructurePoint software, you're also taking advantage of the Portland Cement Association's more than 90 years of experience, expertise, and technical support in concrete design and construction.

Visit StructurePoint.org to download your trial copy of our software products.

For more information on licensing and pricing options please call **847.966.4357** or e-mail info@StructurePoint.org.



For 45 days after your purchase, installation and customer service support are provided to all StructurePoint customers free of charge. We want to ensure that all of our customers are up and running quickly.

Structure Plus is offered as an annual software maintenance program for your convenience. During the twelve month period Structure Plus extends your technical and customer support to a higher level.

Structure Plus Subscriber Benefits

- Unlimited free technical support
- Phone access to technical support engineers
- **Free** updates and administrative services
- Downloadable updates, upgrades and documentation
- **Substantial discount** on software upgrade pricing
- **Additional discount** on network conversions
- Support for commuter and field staff
- Printed copy of manuals upon request
- Discount on selected PCA products including training, seminars and publications

StructurePoint

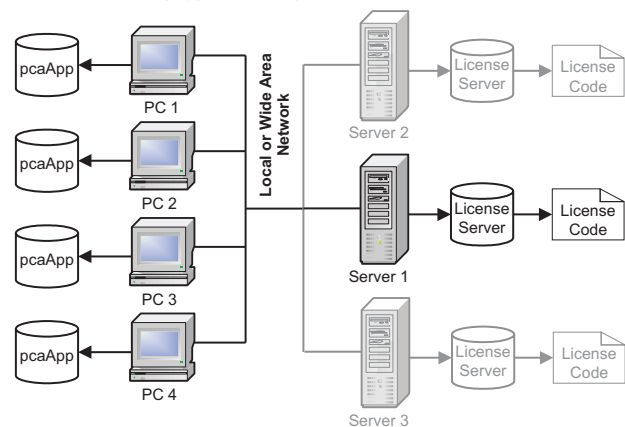
CONCRETE SOFTWARE SOLUTIONS

Work quickly. Work simply. Work accurately.

A Standalone License permits the use of software applications on a single computer. License management is done on that computer and every single installed application requires a separate license code.

Network Licensing provides more flexibility than Standalone Licensing because it can support as many computers in your network as needed. The number of seats encoded in the network license code determines how many users can run the software simultaneously from any computer from within the network. Redundant servers can be set up to backup the primary license server in case it becomes unavailable or all its licenses are in use. The network licenses also provides commuter licensing which allows temporary use of an application on a computer that is not connected to the network.

Network licensing typical configuration



StructurePoint.org • 847.966.4357

