



Remote Commuter License Guide

pcaStructurePoint
5420 Old Orchard Road
Skokie, IL 60077
www.pcaStructurePoint.com
847.966.4357 PH
847.581.0644 FAX

Remote Commuter Licensing

The purpose of this document is to show how to transfer a license from network license server to a remote computer that is not physically connected to the network. In order to simplify the procedures, floppy disks are used to transfer data between license server and remote computer in this document. Transferring data via e-mail is also available.

Here is an overview of how to obtain and install a remote commuter authorization:

1. On license server computer, locate **WRCommute.exe** and **Isapiw32.dll** and copy them to two floppy disks, respectively.
2. A remote user runs **WRCommute** to generate a commuter locking code for the remote computer, and sends the commuter locking code to the local user who has access to the SentinelLM license server.
3. The local user runs **WCommute.exe** (entering the remote user's commuter locking code) to check out a remote commuter authorization, and sends it to the remote user.
4. The remote user runs **WRCommute** to install the remote commuter authorization.

Step #1: (On License Server) Locate **WRCommute.exe** and **Isapiw32.dll**

These two files are located in the following folder on license server if the license server software is installed in default directory.

C:\Program Files\Rainbow Technologies\Admin\Admin.net\Win32\


Copy these two files to two floppy disks, respectively.

Step #2: (On Remote Computer) Getting a Remote Commuter Locking Code

Copy **WRCommute.exe** and **Isapiw32.dll** from floppy disks to a temporary folder on the remote computer's hard drive. Both of them should be copied to the same folder.

The remote user must generate a commuter locking code for his or her remote computer and send it to the network user. Run **WRCommute** and click the **Get Locking Code** tab. You see the commuter locking code for the current computer.



Press  button to save the commuter locking code to a file on a floppy disk.

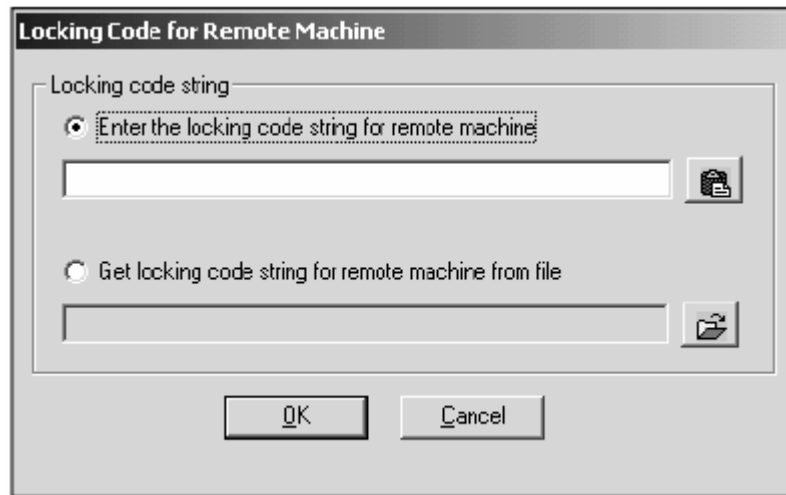
Step #3: (On License Server) Checking Out a Remote Commuter License


The next step is to use **WCommute** on a computer connected to the network containing the SentinelLM license server to check out a commuter authorization for the remote user.

1. Run **WCommute** and select the commuter authorization you want to use from the network as you normally would. By default, **WCommute** is located in the following folder.

C:\Program Files\Rainbow Technologies\Admin\Admin.net\Win32


2. Select the **Check out authorization for remote machine** check box and click **Check Out**. Now **WCommute** displays the **Locking Code for Remote Machine** dialog box.



To choose the commuter locking code from a file, select **Get locking code for remote machine from file** and type the file name in the text box or use the  button to find it.

3. Click **OK**. Next you see the **Remote Commuter Licensing** dialog box.

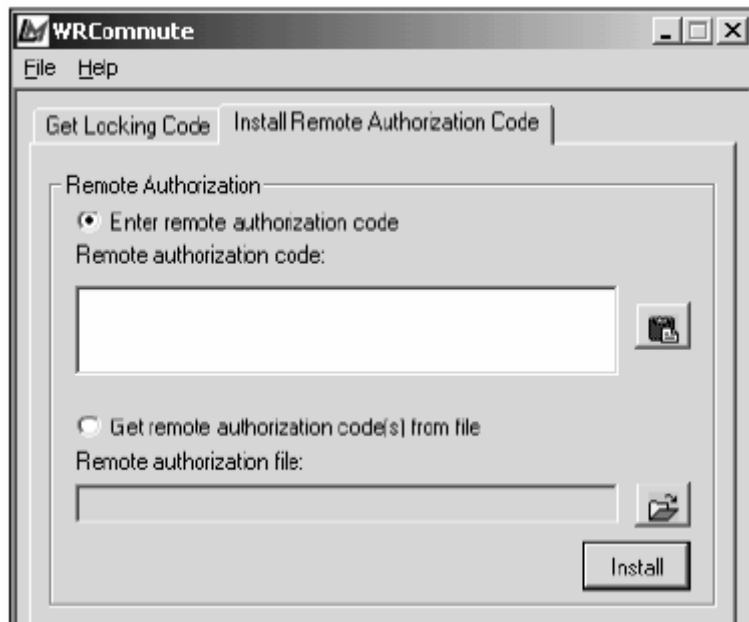



Click the  button to save the commuter authorization to a file on a floppy disk.

Step #4: (On Remote Computer) Installing a Remote Commuter License

Once the commuter authorization has been checked out for the remote user and sent to him or her, the remote user needs to install it. **Note that a remote commuter authorization cannot be checked back into the license server, but will simply expire on the remote computer.**

1. Run **WRCommute** and click the **Install Remote Authorization Code** tab.



To install the authorization code from a file, select **Get remote authorization code(s) from file** and type the file name in the text box or use the  button to find it.

2. Click Install.