

pcaFrame Quick Start Guide

System Requirements

Operating systems

- Microsoft Windows 95
- Windows 98 Second Edition
- Windows ME
- Windows NT4
- Windows 2000
- Windows XP

Minimum Requirements

- 100 MHz processor
- 32 MB of RAM memory
- 50 MB of free hard disk space for program installation
- A monitor supported by one of the operating systems listed above
- A mouse or other pointing device supported by one of the operating systems listed above

Recommended Options

- A printer supported by one of the operating systems listed above with the capability of printing bitmaps
- Most recent OS service pack installed

Running Program Installation

To Start the Installation

1. Insert the **pcaFrame** installation disk into a proper CD drive.
2. If the auto-run functionality of Windows is enabled on your computer (which is the default setting) and a web browser (Internet Explorer, Netscape, etc.) is installed, the start page (Figure 1) is shown automatically. If the start page does not show up automatically, please go to step 7.

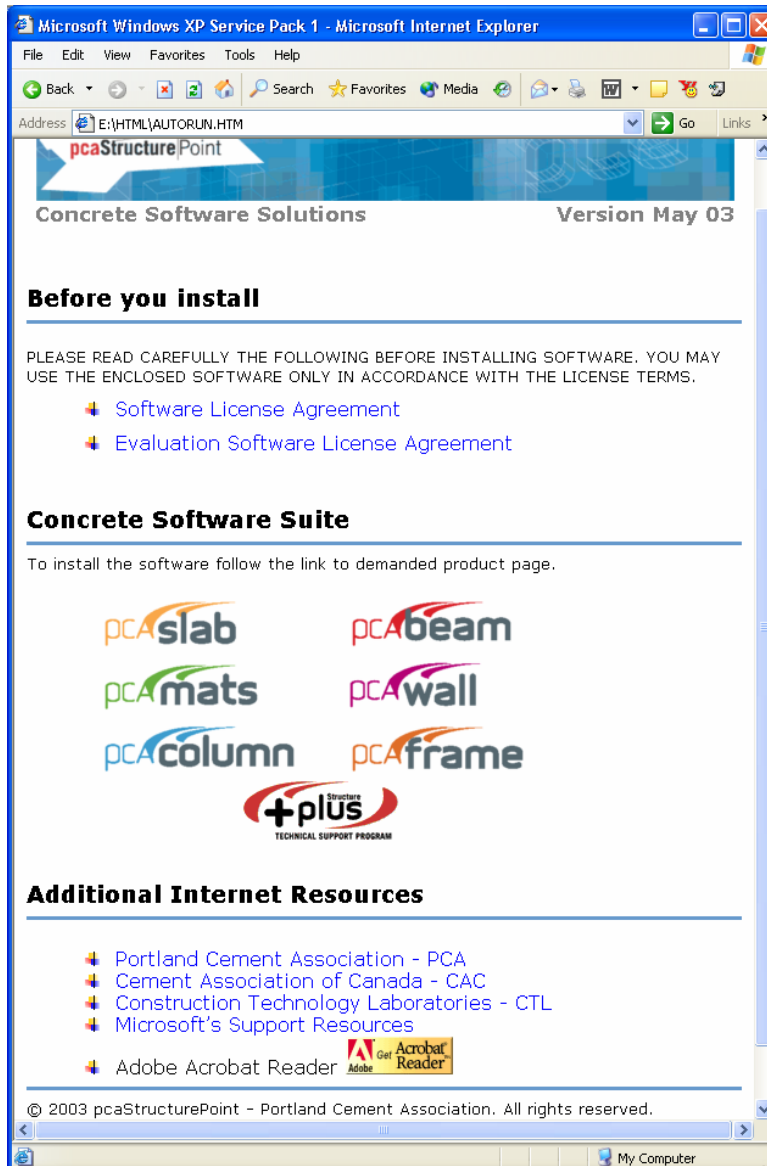



Figure 1 Start Page

3. If you are going to evaluate PCA software, please click the **Evaluation Software License Agreement** link and read through the agreement carefully. If you are going to use a commercial copy of PCA software, please click the **Software License Agreement** link and read through the agreement carefully.

4. Click  to start the installation. A second page will be shown as Figure 2.

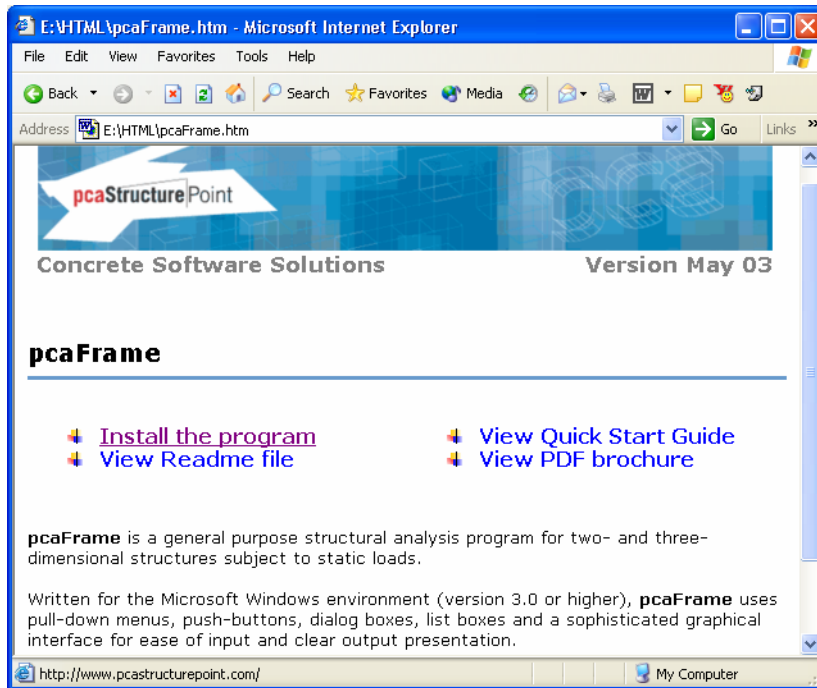


Figure 2 Second Installation Page

5. Click the **Install the program**, then a dialog box will be shown as Figure 3.

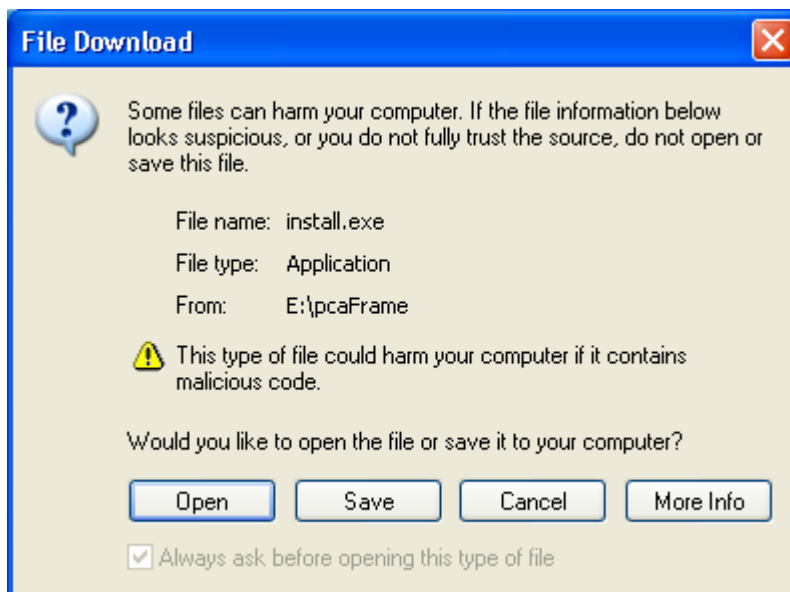
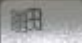


Figure 3 Click Open to Continue

6. Click the button on Figure 3 to continue. You may ignore the following steps and directly go to the **Installation Procedures** section below.
7. If the start page doesn't show up automatically, open the Windows Explorer by following **Start/Programs/Accessories/Windows Explorer** in Windows 95, 98, ME, NT, 2000 or **Start/All Programs/Accessories/Windows Explorer** in Windows XP. You may also start the Windows Explorer by pressing the short cut of  + **E**. A window similar to Figure 4 appears.

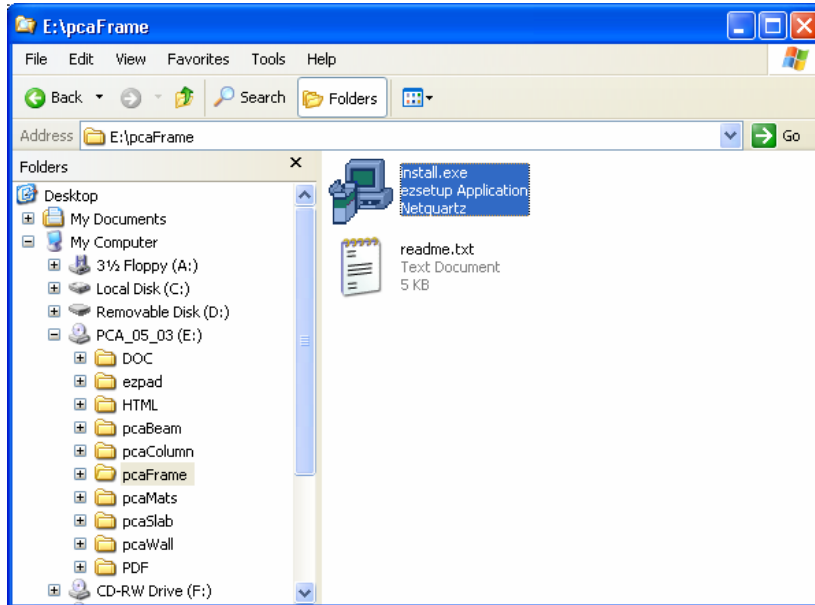


Figure 4 Windows Explorer

8. Select the CD drive from the left pane of Windows Explorer (e.g. E drive in Figure 4).
9. Select the **pcaFrame** folder from the left pane. The contents of this folder are shown in the right pane.
10. Double click the **install.exe** in the right pane of the Windows Explorer then follow the instructions described in Install Procedures below.

Installation Procedures

1. The installation process is started by displaying the following window (Figure 5). If you want to continue the installation, click the button. If you want to quit, click the button.

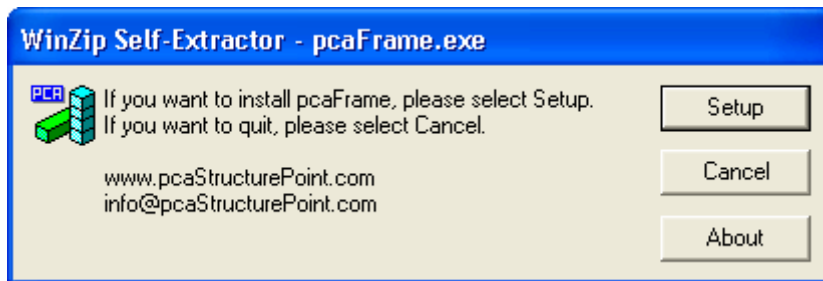


Figure 5 WinZip Self-Extractor

2. After you click the Setup button, the installation package is to extract itself on a temporary folder on the hard disk. The **Setup** button is disabled during the extraction and installation of pcaFrame (Figure 6). From now on, you don't need to pay attention to the WinZip Self-Extractor dialog box until the end of the installation. The temporary folder will be removed automatically after the installation is finished.



Figure 6 WinZip Self-Extractor in process

3. After the package is extracted, the installation process is started by displaying the following window (Figure 7). Please read all the information, click on the check box to confirm that you have read and agree with it. Then press the button. This will initiate the installation process by installing license manager, an evaluation license, and the application software.

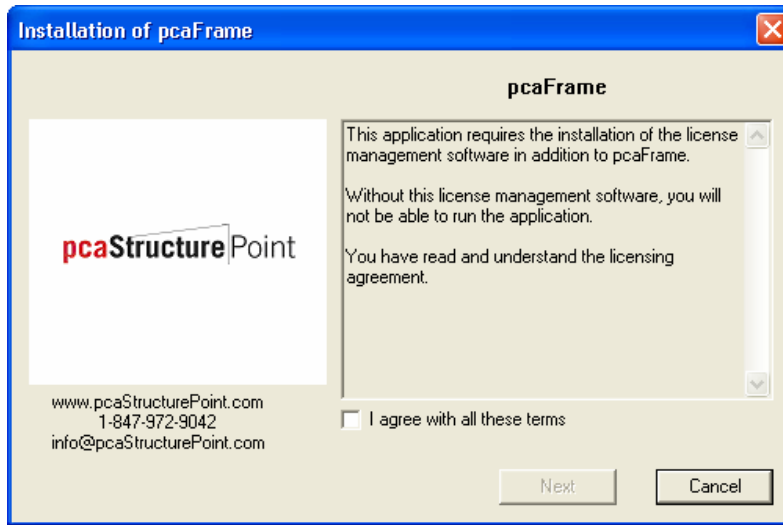


Figure 7 Installation

4. During the installation, a registration window will display (Figure 8). Please take a moment to register. This will help us to send you the latest updates on this software to you periodically. We strongly recommend that you register. Please fill in appropriate information and press button. Another window will display (Figure 9) with all pcaStructurePoint software applications. If you decide to skip registration, press the button (Figure 8).

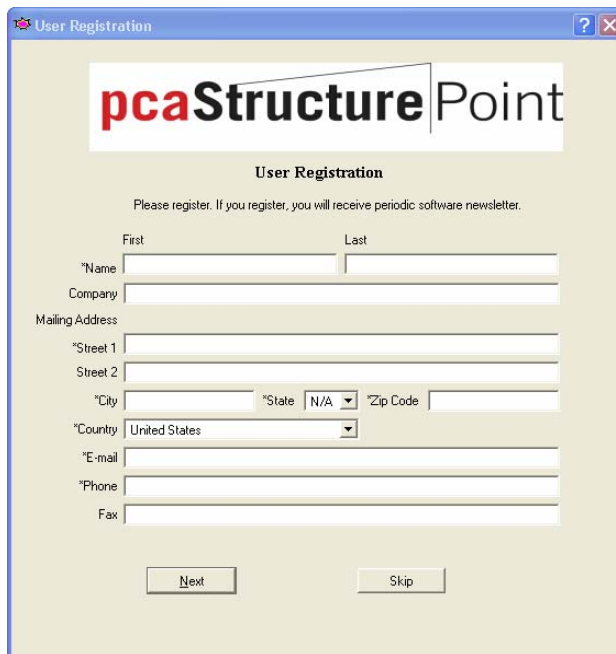


Figure 8 Registration (Part 1)

5. Please select the products that you are interested in (Figure 9). Then press Submit. This will end the registration process and start the application installation process.

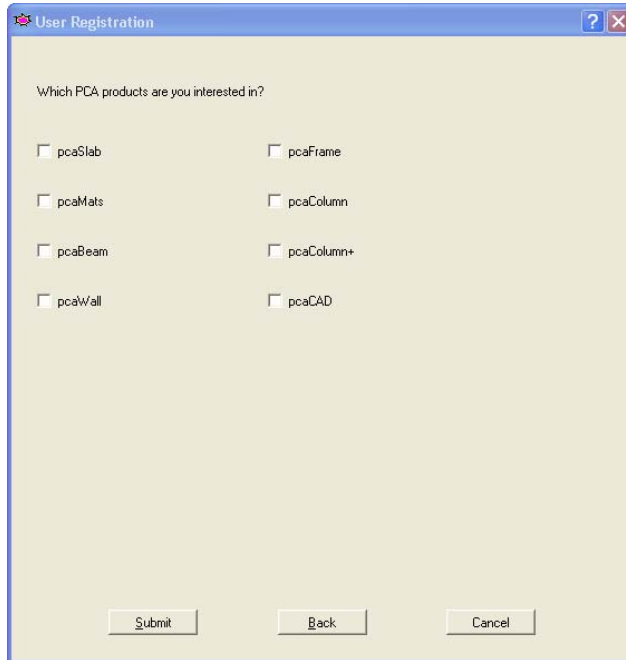
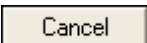
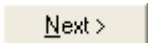


Figure 9 Registration (Part 2)

6. You may press the  button to terminate the installation procedures at any time. The first step is to review the information of the software and the copyrights announcement as shown in Figure 10. Press the  button to go to the next step.

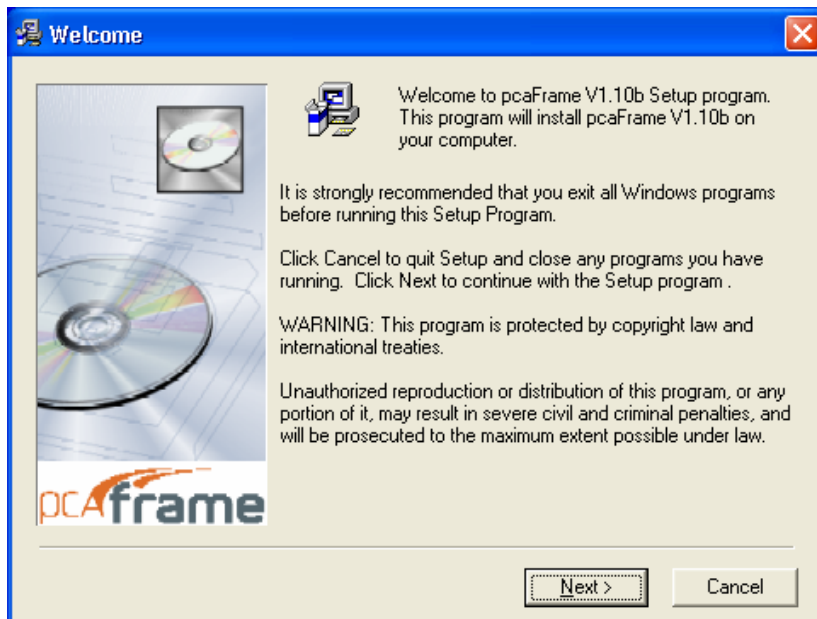
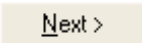


Figure 10 Copyright announcement

7. The next step is to read the Readme file as shown in Figure 11. Press the  button to go to the next step.

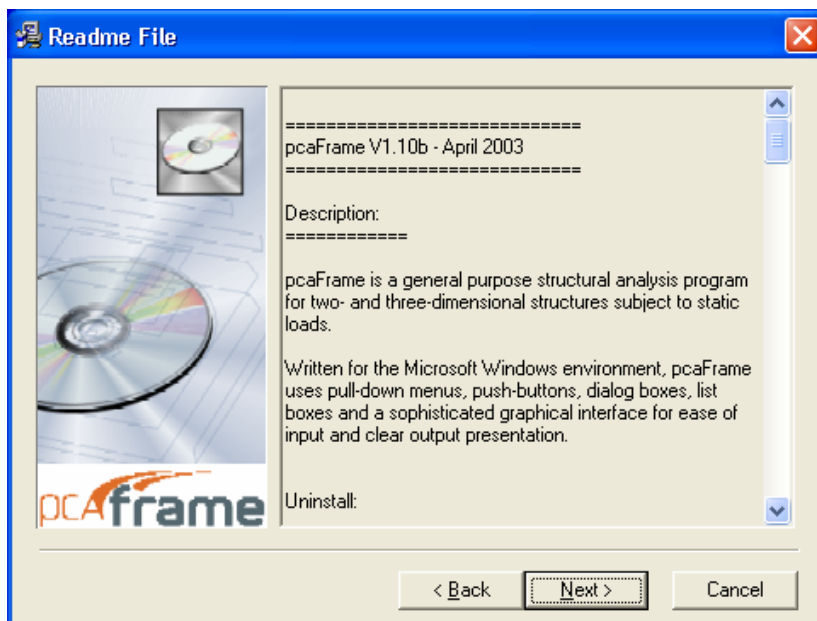


Figure 11 Readme File

8. The next step is to enter the registration information as shown in Figure 12. Enter your name and company name in the corresponding text boxes and press the

button to go to the next step.

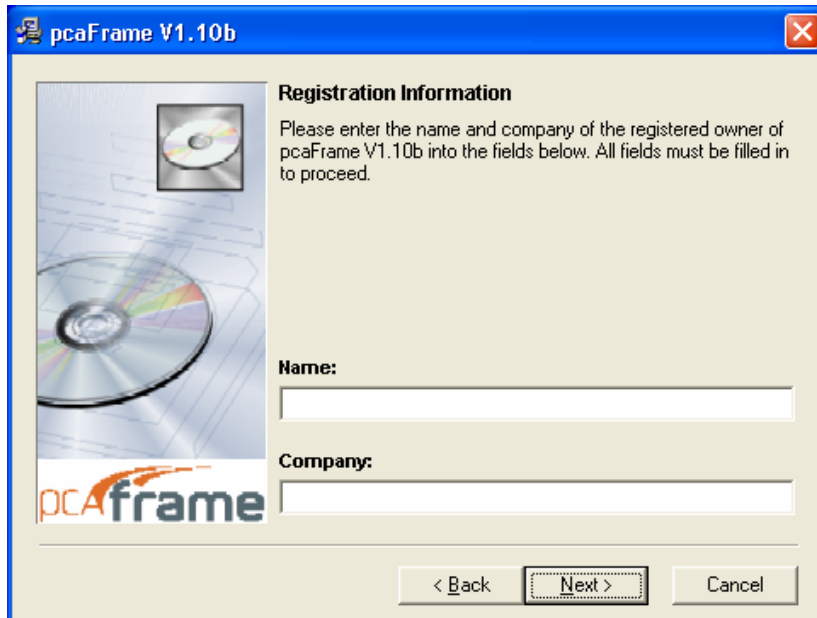


Figure 12 Registration Information

9. The next setup is to decide the directory where **pcaFrame** is to be installed as shown in Figure 13. The default directory is C:\Program Files\PCA\pcaFrame\. To specify an alternate directory, type in the directory complete with a drive letter. You also may press the button to locate the directory. If the directory does not exist, the setup program creates it. Press the button to go to the next step.

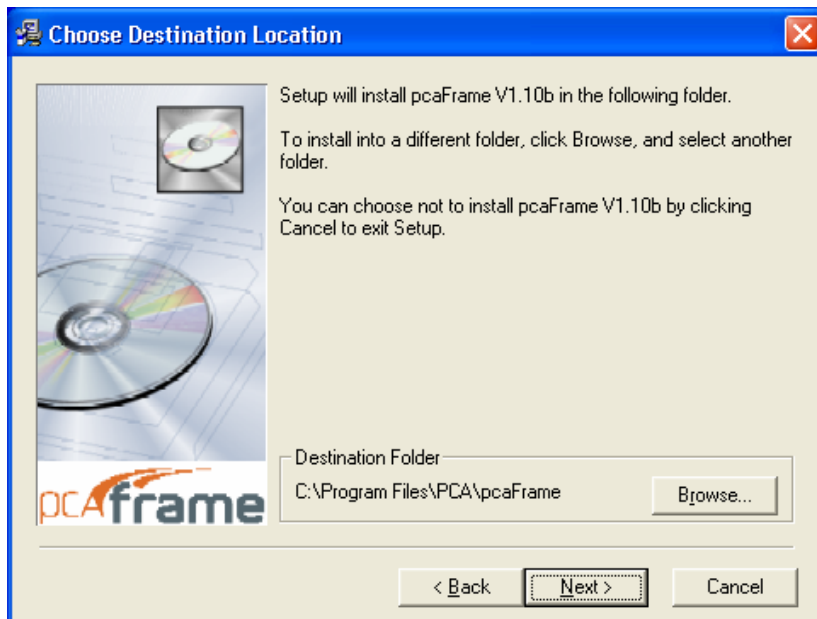


Figure 13 Choose Destination Location

10. The next step is to enter the group name as shown in Figure 14. This name will be used by Windows in the **Start/Programs** menu. Press the button to go to the next step.

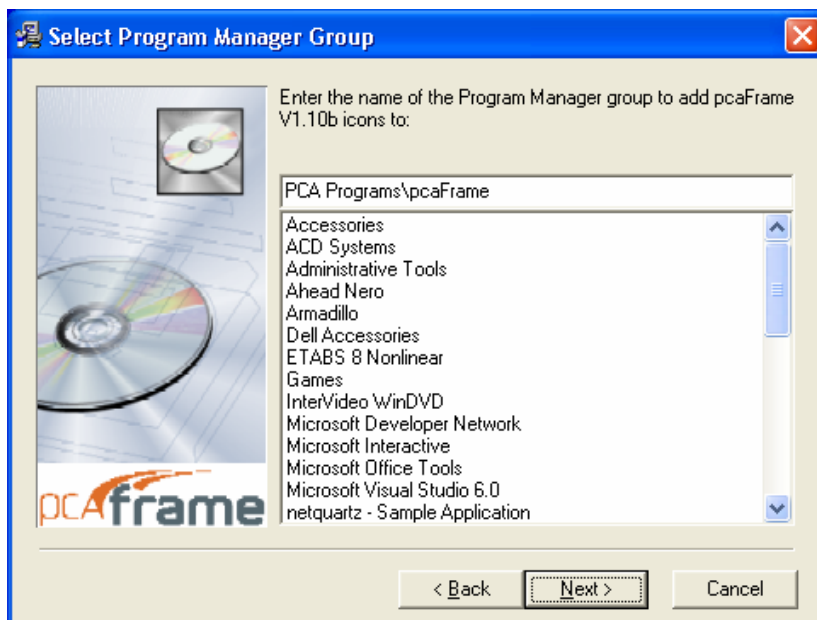


Figure 14 Select Program Manager Group

11. After all the previous steps are completed, press the button as shown in Figure 15 to start the installation.

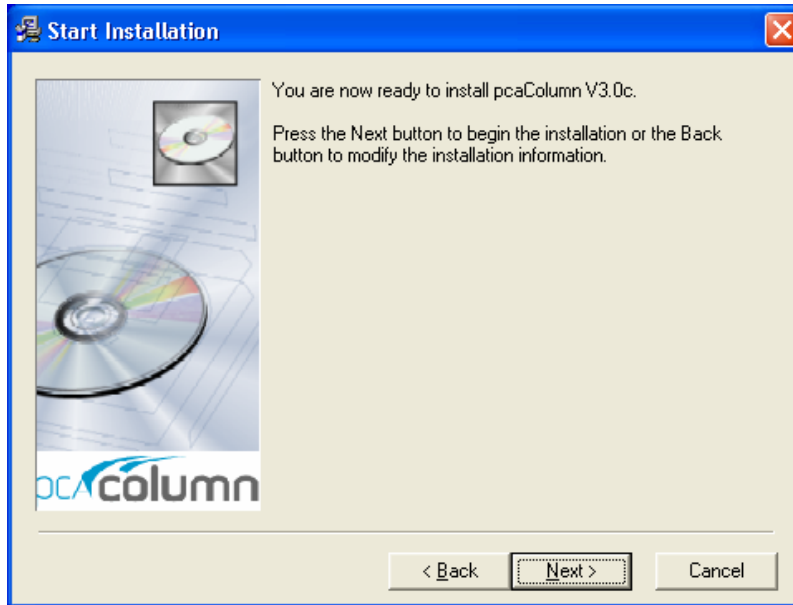


Figure 15 Start Installation

12. After the installation is completed, a dialog box similar to Figure 16 is shown. Press the button to finish the installation.

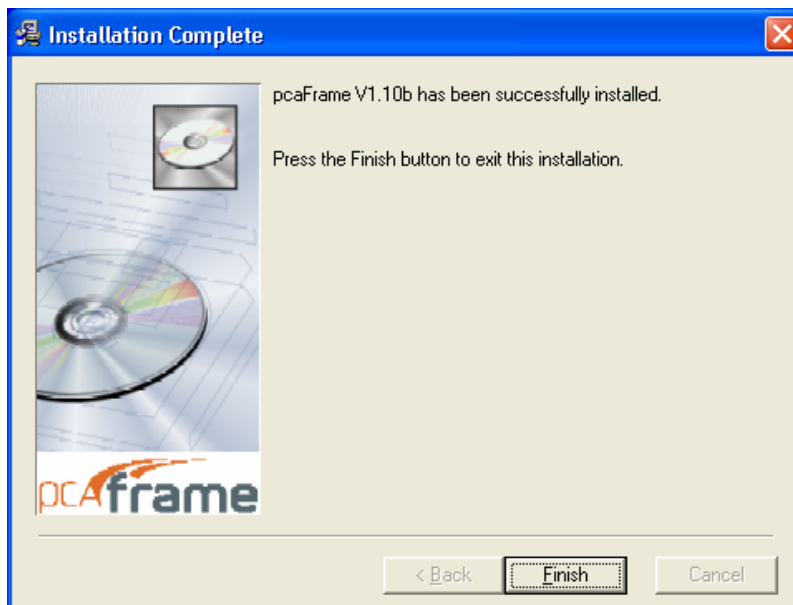




Figure 16 Installation Complete

Purchasing and Licensing Process



Please contact us to activate pcaFrame.

Phone: 1-847-966-4357
Fax: 1-847-581-0644
Email: licensing@pcaStructurePoint.com

Running the Program

1. In Windows 95, 98, NT, 2000 select the  button from the lower left corner of the screen then follow the path of **Programs/PCA Programs/pcaFrame/**.
2. In Windows XP select the  button from the lower left corner of the screen then follow the path of **All Programs/PCA Programs/pcaFrame/**.
3. Select the "pcaFrame" icon.

Removing the Program

1. Click  button (Windows 95, 98, NT, 2000) or  button (Windows XP) on the lower left corner of the screen.
2. In Windows 95, 98, NT, 2000, select **Programs/PCA Programs/pcaFrame/**; In Windows XP, select **All Programs/PCA Programs/pcaFrame/**.
3. Select **Uninstall pcaFrame**.
4. Follow the steps shown by the un-installation wizard to remove the program.